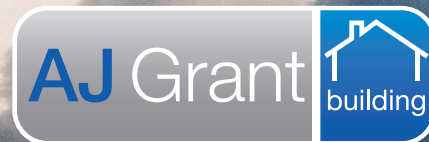


# CAT 212 QLD & NSW Storm Flood Event March 21



AJ Grant Building may be assisting you with a make safe, meaning we have been appointed to make your property safe and not at risk of further damage.

We have been assessing the damages and categorised the varying levels of damage and provided you with an overview of the make safe process. To learn more please visit,

[www.ajgrantgroup.com.au/your-home-and-contents-insurance-claim-march-2021/](http://www.ajgrantgroup.com.au/your-home-and-contents-insurance-claim-march-2021/)

**CLICK TO VISIT NOW**

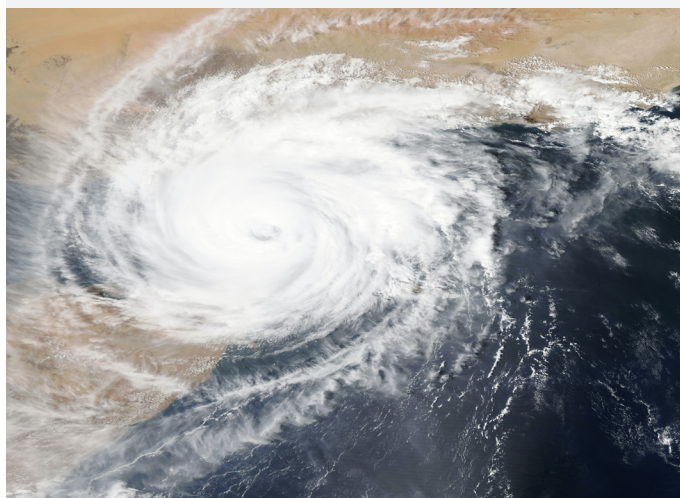
#### **High gusts of wind and heavy rain can cause a range of serious hazards associated with**

- Objects in obscure positions and/or areas
- Objects falling from height, such as hanging tree branches, loose roof tiles,
- Increased risk of collapsed structures,
- Downed powerlines

#### **Hazards that should be considered, include**

- Ground could be unstable and slippery,
- Fallen trees,
- Live overhead powerlines,
- Asbestos debris or damaged asbestos,
- Damaged pool fencing
- Falls from height if assessing roofs

Please take **extra precautions** when entering buildings, completing emergency make safes or accessing customer's homes that have been damaged by floods and winds.



All contractors should be talking with their workers and conducting a site-specific risk assessment and ensure adequate planning and preparation is in place so these identified hazards are managed.

**It is also important to ensure that any loose equipment can't be lifted by the wind, such as**

- Roof sheets
- Ladders
- Tools

## **When working in gusty winds & wet conditions:**

- Wear appropriate PPE, Hi-Vis safety vests, safety boots, eye protection, hard hats etc
- Examine and strengthen structures to ensure they will remain standing during strong winds
- Secure objects that can become airborne
- Wear full fall arrest protection if assessing roofs.
- Secure ladders at the top and bottom prior to use.
- Avoid slippery surfaces in high winds
- Assess if work can be postponed until dry weather

## **AJ Grant Directive**

- DO NOT attempt to drive into ANY flood waters
- Tie down all materials on job sites
- Check all tarps on sites are secured properly
- DO NOT attempt to get up on a roof or work at heights in high winds
- If you are unsure about the risk/hazard – DO NOT attempt it

*If you have any concerns or questions, please call your Manager to discuss.*



## Pool Fencing

High winds can cause damage to many structures on a building; however, pool fences are a priority to make safe.

If you are attending a home that has pool fence damage, it must be made safe immediately. Pool fencing is essential to stop children drowning or being seriously injured.



## Asbestos

Asbestos is an additional high priority when high winds are imminent. An important consideration to assess in windy & wet conditions is the Dust Management of Asbestos.

### Hazards to assess may include:

- Poor weather conditions
- Immediate removal of stockpiles from site
- Application of 'Glue' to encapsulate damaged asbestos to ensure fibres do not become airborne
- Assess if removal work can be postponed until dry weather & a Make Safe will suffice
- Add extra precautions such as Air Monitoring if immediate removal is needed



## Downed Power Lines

If you see downed power lines, always consider all equipment, lines and conductors are energised so please be cautious. Remember that circuits do not always turn off when a power line falls into a tree or onto the ground. Even if they are not sparking or humming, fallen power lines can kill you if you touch them or even go near the ground they are resting on.

**Never approach or touch power lines. Always let a highly trained professional deal with fallen or sagging power lines.**

- Leave the area immediately if you see fallen/sagging power lines.
- Promptly call the energy provider
- Alert police by calling 000 if you are concerned about road and public safety
- Stay clear of fallen tree limbs, power lines and anything they may be touching, like a puddle, vehicle or fence, because it could conduct electricity
- Do what you can to keep others away from fallen power lines
- Be alert for potential hazardous situations